



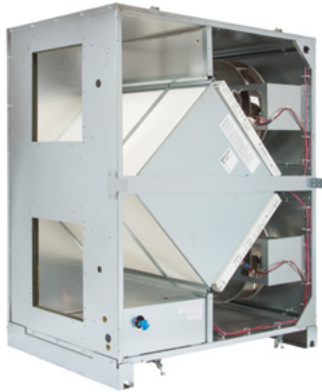
**TRCe
1200**

TRCe1200-115, TRCe1200-230

**ENERGY RECOVERY VENTILATOR
EC MOTOR**



INDOOR UNIT



SPECIFICATIONS

Ventilation Type: Static plate, heat and humidity transfer

Airflow Range: 375–1,470 CFM

AHRI 1060 Certified Core:
One L62-G5 and one L125-G5

Standard Features:
Non-fused disconnect
24VAC transformer/relay package
Cross-core differential pressure ports

Filters: Total qty. 4, MERV 8: (2) 14" x 20" x 2" and (2) 16" x 20" x 2"

Unit Weight: 336–504 lbs., varies by option(s)

Max. Shipping Dimensions & Weight (on pallet):
H: 70" L x 47" W x 53" H
V: 70" L x 47" W x 59" H
571 lbs.

Motor(s):
Qty. 2, 480 W ea., Direct drive EC motorized impellers

Optional Electrical Accessories:

- STC7D-W: Digital Time Clock (wall mount)
- SMC-C: Motion Occupancy Control (ceiling mount)
- SMC-W: Motion Occupancy Control (wall mount)
- SCO2-W: CO2 Control (wall mount)
- BACNETFC-W: BACnet fan control (wall mount)

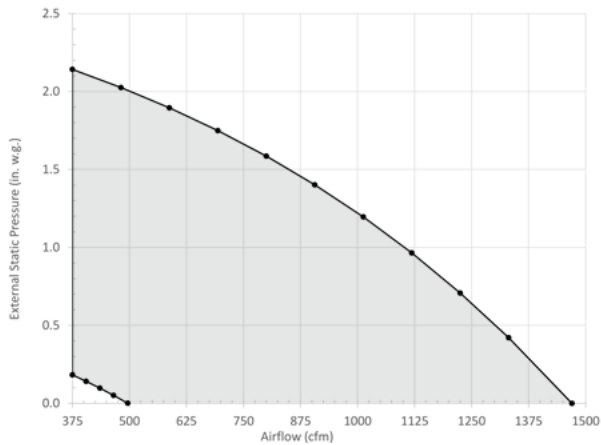
Optional TRCe General Accessories:

- 147594: Bracket Hanging Kit
- 990080: MERV8 (14" x 20" x 2" filter)
- 990229: MERV8 (16" x 20" x 2" filter)
- 990300: MERV13 (14" x 20" x 2" filter)
- 990301: MERV13 (16" x 20" x 2" filter)

Energy recovery core is AHRI Certified®



EC MOTOR OPERATING RANGE AND FAN PERFORMANCE



Airflow (CFM)	External Static Pressure (Inches Water Column)	Unit Power Consumption (Watts)
375	2.14	710
481	2.03	765
588	1.90	814
694	1.75	859
800	1.59	899
906	1.40	933
1013	1.20	963
1119	0.97	987
1225	0.71	1006
1331	0.42	1019
1470	0.00	1029

Note: Watts is for the entire unit. Airflow performance include effect of clean, standard filter supplied with unit.

ELECTRICAL DATA

Max. Unit Watts/HP	Volts	Hz	Phase	Motor Full Load Amperage (FLA) per Motor	Min. Circuit Ampacity	Max. Overcurrent Protection Device
480	120	60	Single	6.7	15.1	20
480	208–230	60	Single	3.4	7.7	15



TRCe 1200 ENERGY RECOVERY VENTILATOR EC MOTOR

ABBREVIATIONS

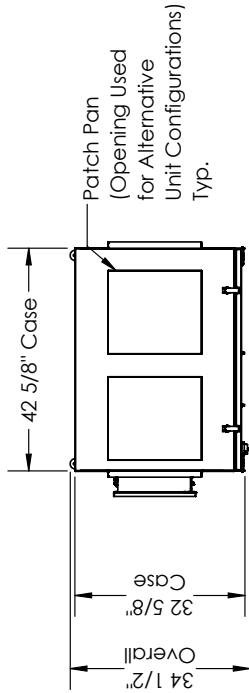
- EA: Exhaust Air to outside
- OA: Outside Air Intake
- RA: Room Air to be exhausted
- FA: Fresh Air to inside

INSTALLATION ORIENTATION

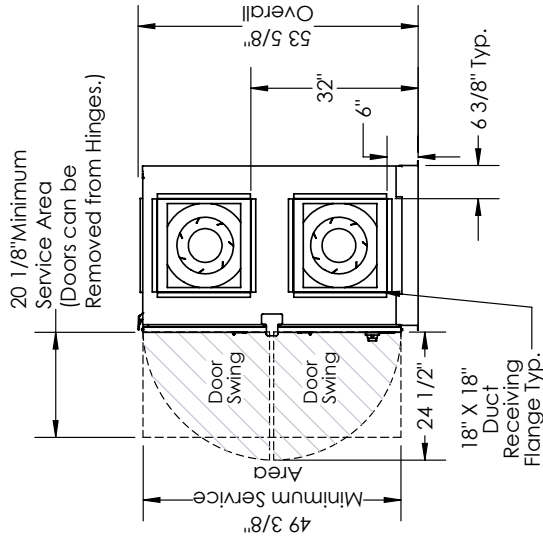
Unit may be installed in any orientation.

NOTE

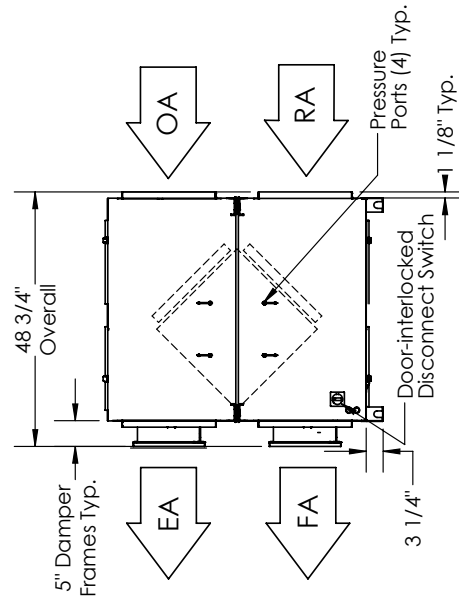
1. UNLESS OTHERWISE SPECIFIED, DIMENSIONS ARE ROUNDED TO THE NEAREST EIGHTH OF AN INCH.
2. SPECIFICATIONS MAY BE SUBJECT TO CHANGE WITHOUT NOTICE.
3. MIN. DUCT CLEARANCE FROM DAMPER BLADE WHEN FULLY OPENED TO BE 2". SMACNA RULES APPLY.



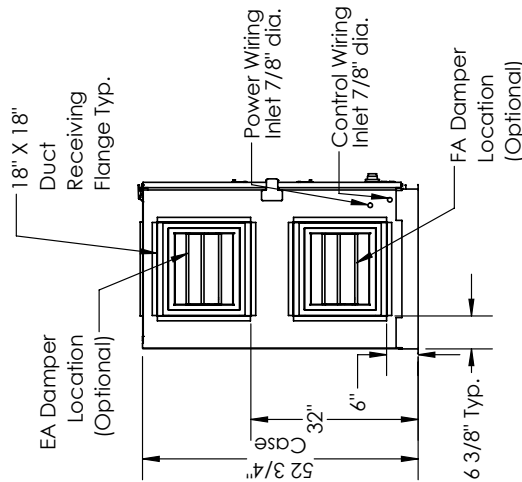
TOP VIEW



RIGHT VIEW



FRONT VIEW



LEFT VIEW



UNIT MOUNTING & APPLICATION
Can be mounted in any orientation. RA/EA airstream can be switched with OA/SA airstream unless certain options are selected. Duct configuration is field convertible.

AIRFLOW ORIENTATION
Available as shown:



TRCe1200V ENERGY RECOVERY VENTILATOR EC MOTOR

ABBREVIATIONS

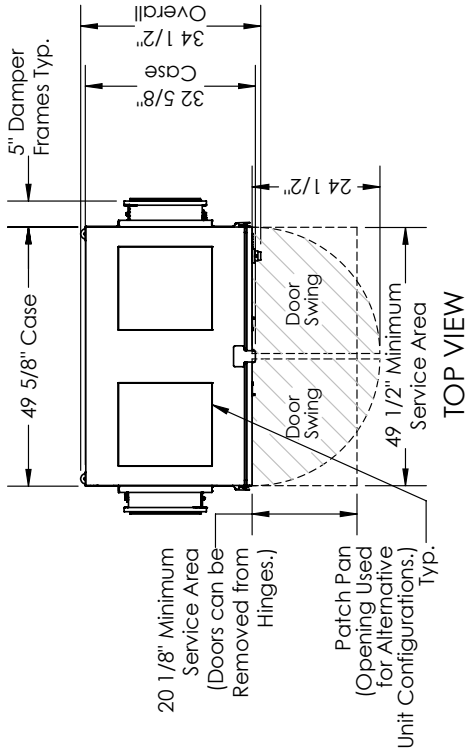
- EA: Exhaust Air to outside
- OA: Outside Air Intake
- RA: Room Air to be exhausted
- FA: Fresh Air to inside

INSTALLATION ORIENTATION

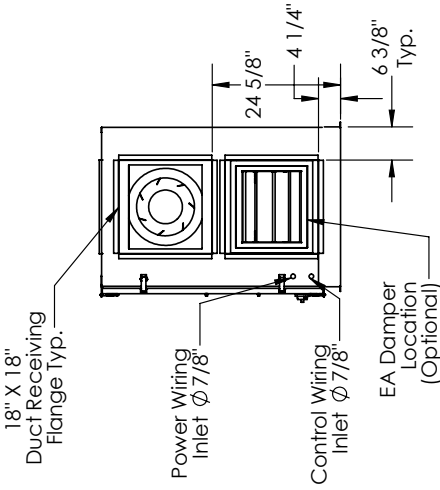
Unit may be installed in any orientation.

NOTE

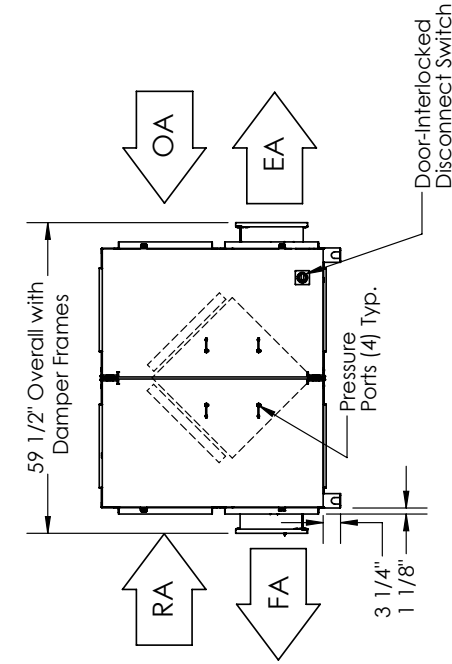
1. UNLESS OTHERWISE SPECIFIED, DIMENSIONS ARE ROUNDED TO THE NEAREST EIGHTH OF AN INCH.
2. SPECIFICATIONS MAY BE SUBJECT TO CHANGE WITHOUT NOTICE.
3. MIN. DUCT CLEARANCE FROM DAMPER BLADE WHEN FULLY OPENED TO BE 2". SMACNA RULES APPLY.



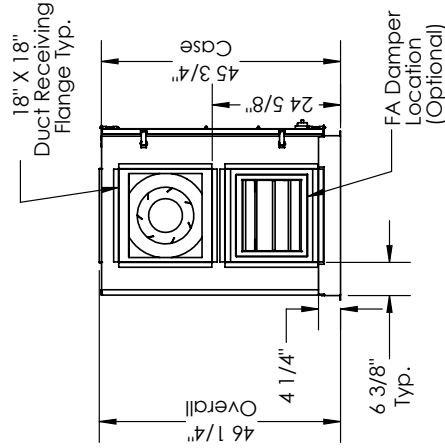
TOP VIEW



RIGHT VIEW



FRONT VIEW



LEFT VIEW



UNIT MOUNTING & APPLICATION
Can be mounted in any orientation. RA/EA airstream can be switched with OA/SA airstream unless certain options are selected. Duct configuration is field convertible.

AIRFLOW ORIENTATION
Available as shown:

