



ADVANCING VENTILATION®

MODEL TRC800V

(Energy Recovery Ventilators -ERV)



Specifications

Ventilation Type: Static Plate, Heat and Humidity Transfer					
Typical Airflow Range: 250-925 CFM					
AHRI 1060 Certified Core: One L125-G5					
Number Motors: Two 0.75 HP ea, direct drive blower/motor packages					
V	Hz	Phase	FLA (per motor)	Min. Cir. Amps	Max. Overcurrent Protection Device
120	60	Single	9.0	20.3	25
208-230	60	Single	4.5	10.1	15
Standard Features: Non-Fused Disconnect 24 VAC Transformer/Relay Package					
Filters: Two total, MERV 8, 2" pleated, 20" x 20" nominal size					
Weight: 201 lbs.(unit), 325 lbs (shipping weight, on pallet)					
Shipping Dimensions: 42" L X 30"W X 71"H					

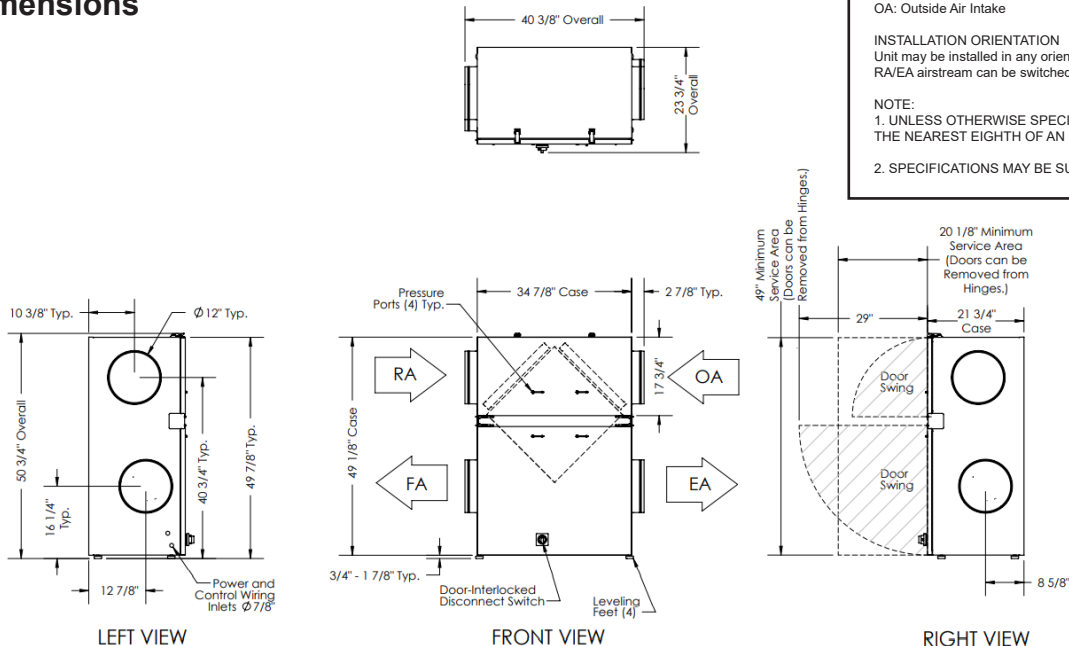
Airflow Performance

Motor HP Phase	External Static Pressure (Inches Water Column)						
	0.0	0.25	0.5	0.75	0.9	1.25	1.5
0.75	970 CFM	925 CFM	860 CFM	795 CFM	750 CFM	635 CFM	480 CFM
Single Phase	1,490 Watts	1,375 Watts	1,270 Watts	1,160 Watts	1,090 Watts	950 Watts	825 Watts

Note: Watts is for the entire unit (two motors).

Note: Airflow performance includes effect of clean, standard filter supplied with unit.

Dimensions



ABBREVIATIONS

EA: Exhaust Air to Outside
RA: Room Air to be Exhausted
FA: Fresh Air to Inside
OA: Outside Air Intake

INSTALLATION ORIENTATION

Unit may be installed in any orientation.
RA/EA airstream can be switched with OA/FA airstream.

NOTE:

- UNLESS OTHERWISE SPECIFIED, DIMENSIONS ARE ROUNDED TO THE NEAREST EIGHTH OF AN INCH.
- SPECIFICATIONS MAY BE SUBJECT TO CHANGE WITHOUT NOTICE.