



MODEL TR300

(Energy Recovery Ventilators- ERV)



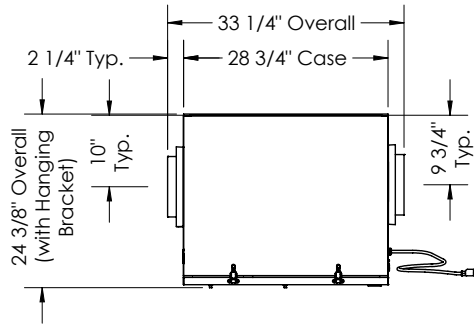
Specifications

Ventilation Type: Static Plate, Heat and Humidity Transfer				
Typical Airflow Range: 150-300 CFM				
Unit may be mounted in any orientation				
Number Motors: One double shafted motor, 0.2 hp				
V	Hz	Phase	Input Watts	FLA
120	60	Single	315 @ 297 CFM	3.3
Control Voltage: 12-14 VAC suitable to power SPTL S&P branded control				
Filters: MERV 8, spun polyester media. 10-1/2" x 21-3/4" x 1"				
Weight: 72 lbs (unit), 115 lbs (in carton)				
Shipping Dimensions: 34" L x 44" W x 34" H				

Unit Performance		Core Performance		
Airflow CFM	ESP in H ₂ O	Temp EFF%	Total EFF% Winter*	Total EFF% Summer*
170	1.0	78	73	59
191	0.9	77	71	57
214	0.8	75	69	55
256	0.7	73	66	51
278	0.6	71	65	49
295	0.5	70	63	47
311	0.4	69	62	46

* Contact Factory for HVI certification report for complete certified rating.
 * HVI ratings apply to complete units only.

Dimensions

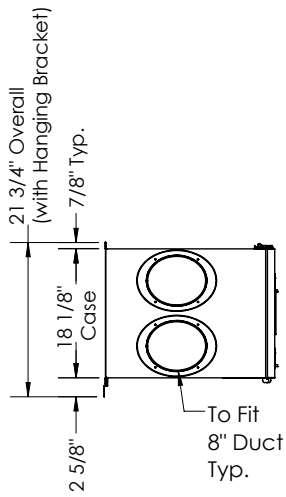


TOP VIEW

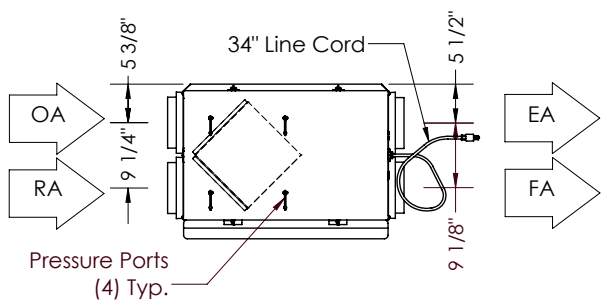
ABBREVIATIONS
 EA: Exhaust Air to Outside
 RA: Room Air to be Exhausted
 FA: Fresh Air to Inside
 OA: Outside Air Intake

INSTALLATION ORIENTATION
 Unit may be installed in any orientation.
 RAE/A airstream can be switched with OA/FA airstream.

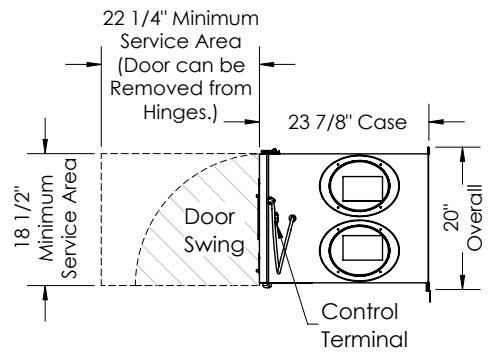
NOTE:
 1. UNLESS OTHERWISE SPECIFIED, DIMENSIONS ARE ROUNDED TO THE NEAREST EIGHTH OF AN INCH.
 2. SPECIFICATIONS MAY BE SUBJECT TO CHANGE WITHOUT NOTICE.



LEFT VIEW



FRONT VIEW



RIGHT VIEW

All specifications are subject to change without notice unless approved in submittal by S&P.

TR300_Submittal_v1_012022

