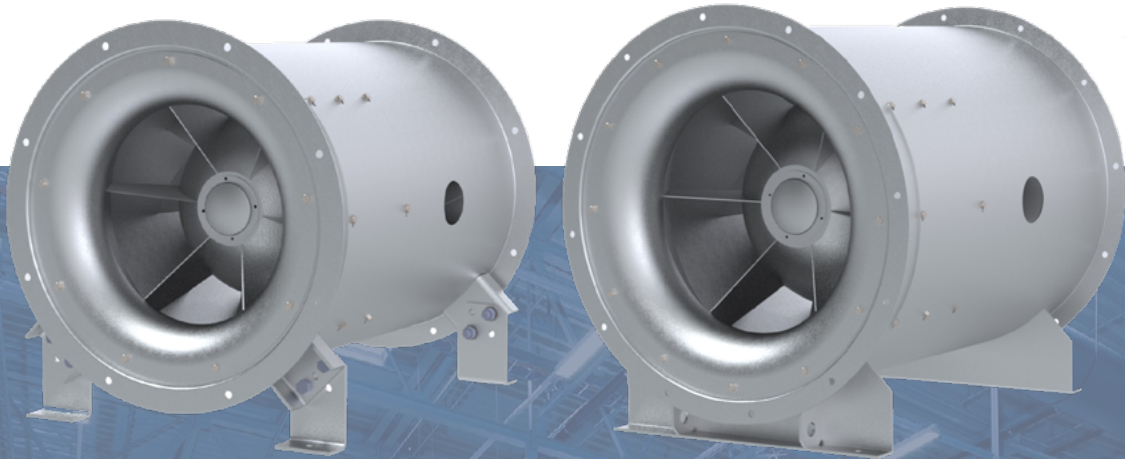




Model SMXD

Direct Drive Mixed Flow Fan

S&P is taking efficiency a step further. Model SMXD mixed flow fans are inline ducted fans that can be used in exhaust, supply, or return air applications.



- Model SMXD is more efficient and quieter than similar tubular centrifugal fans
- Applications include: parking garages, commercial buildings, warehouses, food retail centers, and educational buildings

MODEL FEATURES

- Rated up to 17,800 CFM in static pressure applications up to 5-1/2" w.g.
- 6 sizes ranging from 15 to 24" effective diameter wheels
- Continuously welded and epoxy coated steel housing
- For indoor/outdoor use
- AMCA Air and Sound Licensed
- cULus Listed



S&P USA Ventilation Systems, LLC certifies that the SMXD shown herein is licensed to bear the AMCA seal. The ratings shown are based on tests and procedures performed in accordance with AMCA Publication 211 and AMCA Publication 311 and comply with the requirements of the AMCA Certified Ratings Program.



S&P USA Ventilation Systems
SolerPalau-USA.com