



North American Commercial and Residential

---

# PRODUCT LINE OVERVIEW

# Advancing Ventilation™

# RESIDENTIAL AND LIGHT COMMERCIAL

## MODEL TD



Sizes 100 to 400 cULus Listed  
 1100 to 2,628 CFM ENERGY STAR® Qualified  
 HVI Certified **In-Stock Availability**  
 AMCA Seal for Air

## MODEL TD- SILENT



Sizes 125X to 200 HVI Certified  
 100 to 530 CFM ENERGY STAR® Qualified  
 120V 60Hz **In-Stock Availability**  
 cULus Listed

## MODEL PV



Sizes 100 to 315 AMCA Seal for Air  
 18 to 942 CFM **In-Stock Availability**  
 HVI Certified Dryer Booster Kit Available  
 cULus Listed

## MODEL SWF



Sizes 100 to 200 HVI Certified  
 100 to 400 CFM **In-Stock Availability**  
 120V 60Hz  
 cULus Listed

## MODEL PC



Sizes 50 ENERGY STAR® Qualified  
 50 CFM **In-Stock Availability**  
 cETLus Listed  
 AC Motor  
 HVI Certified

## MODEL PCXP



Sizes 80 to 150 AMCA Seal for Air & Sound  
 80 to 150 CFM  
 cETLus Listed ENERGY STAR® Qualified  
 AC Motor **In-Stock Availability**  
 HVI Certified

## MODEL PCV



Sizes 50 to 80 ENERGY STAR® Qualified  
 50 to 80 CFM (80 only)  
 AC Motor HVI Certified  
 cETLus Listed **In-Stock Availability**

## MODEL PCRL



Size 80 ENERGY STAR® Qualified  
 80 CFM AC Motor  
 HVI Certified **In-Stock Availability**  
 cETLus Listed

## MODEL PCLP



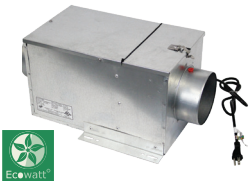
Sizes 80 to 100 ENERGY STAR® Qualified  
 80 to 100 CFM  
 AC Motor HVI Certified  
 cETLus Listed **In-Stock Availability**

## MODEL PCD



Sizes 110-200 HVI Certified  
 40 to 200 CFM AMCA Seal for Air & Sound (PCD200)  
 DC Motor cETLus Listed  
 Humidity, motion, and VOC sensing models **In-Stock Availability**  
 ENERGY STAR® Qualified **Ecowatt®**

## MODEL reFresh



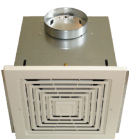
Sizes 8 and 10 HVI Certified  
 AC and EC Motors ENERGY STAR® Qualified  
 20 to 170 CFM cULus 507 & 2043 Listed  
 AMCA Seal for Air & Sound **Ecowatt®**

## MODEL PRF



Sizes 100 to 150 AC Motor  
 169 to 321 CFM HVI Certified  
 cETLus Listed **In-Stock Availability**

## MODEL AF/FF/FFC



Sizes 50 to 3500 AMCA Seal for Air & Sound  
 50 to 3500 CFM cULus Listed  
 ENERGY STAR® Qualified **In-Stock Availability**

## MODEL MD and MDX-ES24VK kits



4" to 14" diameter  
 Kits include MD + ES24V control  
 Kits available in sizes 4" to 8"

# ENERGY RECOVERY VENTILATORS

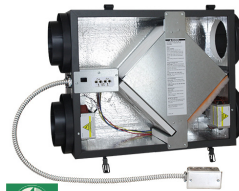
## MODEL TR



Sizes 90 to 300  
40 to 310 CFM  
120V 60Hz  
AC Motor  
cULus Listed

TRC 800- Vertical and Horizontal configurations available

## MODEL TRLPe



Size 100  
40 to 310 CFM  
120V 60Hz  
cETLus Listed

**Ecowatt®**



## MODEL TRC & TRCV



Sizes 50 to 1600  
200 to 2,200 CFM  
120V 60Hz  
208-230V 60Hz  
460V 60Hz

AC Motor  
cETLus/cULus Listed  
AHRI Certified  
TRC800- Vertical + Horizontal configuration

## MODEL TRCe



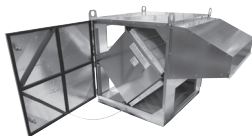
Sizes 500 to 1200  
200 to 2,200 CFM  
120V 60Hz  
208-230V 60Hz  
cETLus Listed  
AHRI Certified

EC Motor  
TRCe800 - Vertical and Horizontal Configurations

**Ecowatt®**



## MODEL CRT



3 Models with 2, 3 or 4 cores  
500 to 4,000 CFM  
AHRI Certified Core

# CENTRIFUGAL ROOF AND SIDEWALL FANS

## MODEL LPD



Sizes 6 to 8  
50 to 420 CFM  
AMCA Seal for Air & Sound

cULus Listed  
Sidewall mount available  
**In-Stock Availability**

## MODEL CWD



Sizes 7 to 16  
66 to 3360 CFM  
AMCA Seal for Air & Sound

cULus Listed  
**In-Stock Availability**

## DIRECT DRIVE MODELS

### MODEL SDBD



EC Motors  
Sizes 6 to 16  
53 to 3298 CFM  
AMCA Seal for Air & Sound

cULus Listed  
Sidewall mount available  
**In-Stock Availability**

### MODEL SDBDe



Sizes 7 to 16  
53 to 4984 CFM  
115/208-230 60Hz  
208-230 50Hz

AMCA Seal for Air & Sound  
cULus Listed  
**In-Stock Availability**



### MODEL STXD/STXD-RHUL



Sizes 6 to 16  
55 to 4,781 CFM  
Sidewall mount available

Sidewall mount available  
AMCA Seal for Air & Sound  
cULus 705 or 762 Listed  
**In-Stock Availability**

### MODEL STXDe/STXDe-RHUL



EC Motors  
Sizes 6 to 16  
56 to 3,187 CFM  
AMCA Seal for Air & Sound

cULus 705 or 762 Listed  
Sidewall mount available  
**In-Stock Availability**

**Ecowatt®**

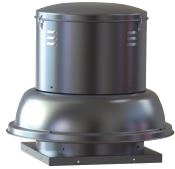


**What is ECOWATT?** S&P has developed the Ecowatt® standard to classify energy-efficient products that use Electronically Commutated (EC) or Direct Current (DC) motors. Models that fall under this standard have a certified performance through AMCA (Air Movement & Control Association International, Inc.) or HVI (Home Ventilating Institute). If the products designed for residential applications the model must be ENERGY STAR® qualified.



BELT DRIVE MODELS

MODEL SDB



Sizes 6 to 48  
41 to 31,563 CFM  
AMCA Seal for Air & Sound

cULus Listed  
In-Stock Availability

MODEL STXB/STXB-RHUL/ STXB-HT2



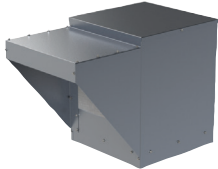
Sizes 8 to 48  
201 to 33,272 CFM  
AMCA Seal for Air & Sound

cULus Listed 705 or 762  
cULus 793 Listed (STXB-HT2)  
In-Stock Availability

ROOF SUPPLY FANS

BELT DRIVE MODELS

MODEL KSFV



Sizes 9 to 20  
466 to 12,600 CFM  
AMCA Seal for Air & Sound

cULus Listed  
Intake extension available  
In-Stock Availability

MODELS CSF & LSF



Sizes 9 to 20  
440 to 12,520 CFM  
AMCA Seal for Air  
cULus Listed

Hooded or Louvered housings  
In-Stock Availability (CSF)

Note: Motor availability varies by horsepower and size.

CENTRIFUGAL INLINE FANS

BELT DRIVE MODELS

MODEL SQB



Sizes 7 to 42  
98 to 24,544 CFM  
AMCA Seal for Air & Sound

cULus Listed  
In-Stock Availability

MODEL CTB/CTB-RHUL



Sizes 9 to 42  
300 to 20,000 CFM

AMCA Seal for Air & Sound  
cULus 705 or 762 Listed

MODEL CFB



Sizes 7 to 15  
200 to 5,800 CFM  
AMCA Seal for Air & Sound

cULus Listed  
In-Stock Availability

MODEL CVTT

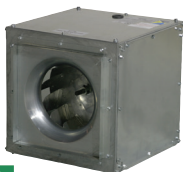


Sizes 7 to 30  
300 to 20,300 CFM

In-Stock Availability

DIRECT DRIVE MODELS

MODEL SQD/eSQD



Sizes 6 to 15  
AC & EC motors  
93 to 2,879 CFM  
AMCA Seal for Air & Sound

UL Listed  
Ecovatt®  
In-Stock Availability

# PROPELLER SIDEWALL FANS

## DIRECT DRIVE MODELS

### MODEL GED/GSD/eGED/eGSD



**LOW PRESSURE**

Sizes 10 to 20  
AC & EC Motors  
200 to 4183 CFM  
cULus Listed

AMCA Seal for Air & Sound

In Stock Availability  
(GED and eGED only)

**Ecowatt®**

### MODEL DFE/DFS



**MEDIUM PRESSURE**

Sizes 10 to 30  
37 to 12,415 CFM

### MODEL DDE/DDS

**HIGH PRESSURE**



Sizes 24 to 60  
3,000 to 55,800 CFM

### MODEL S



Sizes 8-36  
140-12,000 CFM

In Stock Availability

## BELT DRIVE MODELS

### MODEL LCE/LCS

**LOW PRESSURE**



Sizes 20 to 60  
2,783 to 40,855 CFM  
AMCA Seal for Air & Sound

cULus Listed

In-Stock Availability

### MODEL L2E/L2S

**MEDIUM PRESSURE**



Sizes 24 to 60  
2,733 to 47,161 CFM  
AMCA Seal for Air & Sound

cULus Listed

In Stock Availability

### MODEL L3E/L3S

**HIGH PRESSURE**



Sizes 42 to 72  
21,683 to 85,089 CFM

AMCA Seal for Air & Sound

cULus Listed

# INLINE TUBEAXIAL FANS

### MODEL TDD



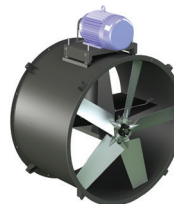
**DIRECT DRIVE MODEL**

Sizes 12 to 48  
855 to 40,194 CFM

AMCA Seal for Air & Sound

cULus Listed

### MODEL TDB



**BELT DRIVE MODEL**

Sizes 12 to 60  
914 to 75,490 CFM

AMCA Seal for Air & Sound

cULus Listed

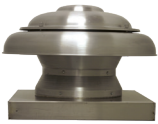
In Stock Availability

**Note:** Motor availability varies by horsepower and size.

# PROPELLER ROOF VENTILATORS

## DIRECT DRIVE MODELS

### MODEL ARE/ARS



Sizes 10 to 20  
167 to 2827 CFM  
AMCA Seal for Air & Sound

UL Listed  
**In-Stock Availability**

### MODEL HRED-C (Exhaust)



Sizes 24 to 60  
1,193 to 48,780 CFM

AMCA Seal for Air  
Reversible models available (3 Phase)

### MODEL HRSD (Supply)



Sizes 24 to 54  
2,509 to 50,109 CFM

Reversible models available (3 Phase)  
Filtered models available

### MODEL UBX (Exhaust)



Sizes 24 to 72  
5,200 to 65,500 CFM

AMCA Seal for Air & Sound

## BELT DRIVE MODELS

### MODEL UBS/UBS-P (Exhaust)



Sizes 24 to 60  
3732 to 58,500 CFM  
cULus Listed

UBS-P has a polypropylene propeller  
**In-Stock Availability UBS 24-36,48**

### MODEL HREB-C (Exhaust)



Sizes 24 to 60  
1,159 to 48,414 CFM  
AMCA Seal for Air

cULus Listed  
Reversible Models Available (3 Phase)

### MODEL HRSB (Supply)



Sizes 24 to 60  
2,979 to 52,534 CFM  
UL Listed

Filtered models available  
Reversible Models Available (3 Phase)

### MODEL UBB (Exhaust)



Sizes 24 to 72  
4,800 to 70,800 CFM

cULus Listed  
AMCA Seal for Air & Sound

**Note:** Motor availability varies by horsepower and size.

## REMOTE DRIVE MODELS

### MODEL UBSRD/UBSRD-HT/UBSRD-HT1 (Exhaust)



Sizes 24 to 60  
4,977 to 52,173 CFM  
cULus Listed

UL-793 Hi-Temperature for Heat & Smoke Removal (UBSRD-HT1 ONLY)

### MODEL TUB/TUB-HT/TUB-P (Exhaust)



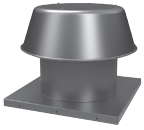
Sizes 24 to 60  
4,321 to 60,116 CFM

TUB-P has a polypropylene propeller

UL-793 Hi-Temperature for Heat & Smoke Removal (TUB-HT)

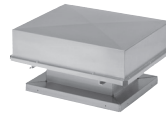
# GRAVITY VENTS INTAKE/RELIEF

## MODEL RCXII & RCXII-SF



Sizes 6 to 36  
64 to 10,378 CFM  
Static Pressure to .350"  
Voltage N/A  
Curb mounted or Self-Flashing

## MODEL BGH/RLX

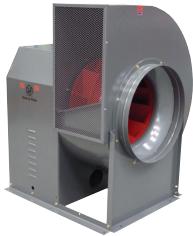


BGH Size 12 X 12 to 72 X 144  
RLX Size 12X12 to 84X144;  
3 tiers up to 20 tiers  
536 to 90,000 CFM  
Voltage N/A  
Static pressure to 1/4"

# UTILITY EXHAUST/SUPPLY FAN

## BELT DRIVE MODELS

### MODEL CM/CM-RHUL/CM-HT



Sizes 10 to 36  
499 to 23,958 CFM  
AMCA Type C Spark Resistant Option Available  
AMCA Seal for Air & Sound  
cULus 705, 762, & 793 Listings  
In-Stock Availability

**Note:** Motor availability varies by horsepower and size.

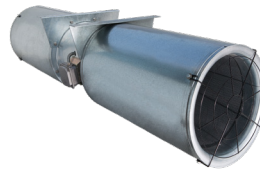
# JET FAN SERIES

## MODEL IFFT



Sizes 50N to 100N  
1,754 to 5,238 CFM  
cULus Listed

## MODEL TJFU



Sizes 315 to 400  
1,560 to 6,474 CFM  
cULus Listed

## MODEL IFAB



12N thrust  
1,530 CFM  
cULus Listed

# QUICK SELECTION

Model	Mounting Location					Airflow		Application						Motor/Drives			Impeller Type			
	Roof Curb	Floor/Base	Hanging	Wall	Ceiling	Exhaust	Supply	General/Clean Air	Contaminated Air	Spark Resistant	Grease/Restaurant (UL762)	Smoke Control (UL)	High Temp above 200° F	Energy Recovery	Belt	Direct	Ecowatt (EC Motor Available)	Centrifugal	Propeller	Mixed Flow
<b>Residential/Light Commercial</b>																				
TD					X	X	X	X								X			X	
TD-SILENT					X	X	X	X								X			X	
PV					X	X	X	X								X		X		
reFresh					X		X	X								X		X		
SWF				X		X	X	X								X		X		
PC/PCLP/PCV/PCRL				X	X	X	X	X								X		X		
PCD					X	X	X	X								X		X		
FF/FFC			X		X	X	X	X								X		X		
PRF					X	X	X	X								X		X		
<b>Recovery Ventilators (ERVs &amp; HRVs)</b>																				
TR		X			X	X	X	X	X					X		X		X		
TRC			X		X	X	X	X	X					X		X		X		
TRCe					X	X	X	X	X					X		X		X		
CRT					X	X	X	X	X					X		X		X		
<b>Centrifugal Roof and Sidewall Fans</b>																				
LPD	X			X		X		X	X	X						X		X		
SDBD/SDBDe	X					X		X	X	X						X		X		
SDB	X					X		X	X	X						X		X		
STXB	X			X		X		X	X	X						X		X		
STXB-RHUL	X					X		X	X	X						X		X		
STXB-HT2	X					X		X	X	X						X		X		
STXD/STXDe	X				X	X		X	X	X						X		X		
STXD-RHUL/STXDe-RHUL	X					X		X	X	X						X		X		
CWD				X		X		X	X	X						X		X		
<b>Centrifugal Filtered Supply</b>																				
CSF/LSF	X							X	X	X						X		X		

\* Models TR, TRC(e) and CRT (ERVs) have a 10-year core warranty and a 5-year warranty on the balance of the TR unit and a 2-year warranty on the balance of the TRC(e) and CRT.





# COMPETITORS CROSS REFERENCE MODELS

Models are for general similarity only. Refer to specifications and construction data for details.

S&P	Description	Coolair	Cook	Twin City	Penn	Acme	Carnes	Green-heck	Fantech	Canarm/ Delhi
ARE / ARS	R/T Dome Exhaust/Supply Axial. DD	SASD/SAED	AQD	--	DAE	LQ	LEDA	ALS	ADE/ADS	--
CBM	Direct drive dual inlet blower DD	--	--	--	--	--	--	--	BLR	GDD
CBP	Belt drive dual inlet blower BD	--	--	TFC	--	--	--	--	--	G
CBP-RC	Belt drive dual inlet Framed blower BD	--	--	VFC	--	--	--	--	--	800
CBP-RE	Belt drive dual inlet framed HD blower BD	--	--	TFC-2	--	--	--	--	--	900
CBS	Single inlet blower BD	--	--	DBS	--	--	--	--	--	400
CFD	Forward curve air handler 7 to 15 BD	--	DB	DBS	ZC	--	VDBA	--	--	200
CM	Vent Sets/ BI / cUL705 & 762 & 793 BD	VSBC	CPV/S	BCV/J	D/RPK	QBR	--	SWB	--	BI/BI-RM
CSF	R/T Centrifugal Filtered Supply BD	CFS	ASP	FSR	MU	--	VHBB/VSBB	RSF	--	700
CTB/CTBRHUL	Inline Duct Centrif. BD	-	TCN	TCLB/TCLBR	TUB	TIB	VGBA	TCB	-	-
CVIT	Forward curve air handler 7" to 30 BD	--	--	DBS	--	--	VGBA	--	--	9200
CWD	Sidewall Exhaust Centrif. DD	CWDA	ACWD	TCWX	WX/WA/WB	PW	VWVK	GW	--	--
DFE/DFS	Sidewall Exhaust/Supply Prop. DD	--	SWD	--	BX	FQ/FN/ FQ-R/FN-R	LDB/LKDB	SE2/SS2	--	ADD
DDE/DDS	HD Sidewall Exhaust/Supply Prop. DD	--	AWD	--	BC	FN/FN-R	LRDA/LNDA	SCE3/SE3/ SCS3/SS3	--	DDP/DDS
eSQD	Square Inline Duct Fan Centrif. DD ECM	--	SQI w/ECM	--	SW w/ECM	--	--	SQ-VG	--	--
FCB	Belt drive Forward curve vent set BD	--	--	FCV	--	--	VFB	SFB	--	600
FF/FFC	Ceiling Cabinet fans DD	CF/CFL	GC-GN	T/TL	ZEPHER-Z	V/VQ/VQL	VCDD	SP/CSP	CEV/IEV	--
GED / GSD	Sidewall Exhaust/Supply Prop. DD	CDC	APD	TCPE	P	FQ/FN	LTDK/LZDK	SE1/SS1	VLD	P
HREB-C	R/T Hooded Exhaust Propeller BD	PEB	HXE/HEE	LPHD/B	AF/AC	EC/ECH	LTBA	RBE/RBCE	RHE	PRE
HRSB	R/T Hooded Supply Propeller BD	PSB	HXS/HES	HVWP	AF/AC	EC-S/ ECH-S	LGBA	RBS/RBCS	RHS	PRI
KE	Radial blade pressure blower DD	--	CPFD	JRW	--	--	--	IPA	--	KE
KSFV	R/T Filtered fresh air supply fan BD	CFS/SIS	KSPB	BCFS	MU/FS	AFSI	VSBB	KSU/RSF	FSU	SIS/SBAR
L2E / L2S	HD Sidewall Exhaust/Supply Prop. BD	CAL	XL/XM/ AWB/HWB	TCWPX *	BFM/BFH/BCH	DCK/DCH	LABA	SBE/SBC	MDE	XB / HV
LCE / LCS	Sidewall Exhaust/Supply Prop. BD	CAB/CBL	XLM/SWB	WPMD	BLB/BFM/BBK	DC/DCK	LWBA/LWBK	SBE/S1&2	SDE	XB
LPD	R/T Down Blast Exhaust Centrif. DD	CRDA	ACED	DCRD	DX	PRN	VEDK	G	REC/DDD	DR-H/300/CDR
PC	Ceiling fans less .3 sones DD	-	GEMINI	-	ZEPHYR	-	-	-	-	-
PV	backward incline inline fan DD	--	--	--	--	--	--	--	FG	-
PW	Radial blade pressure blower DD	--	--	--	--	--	--	FPB	--	PW
RXII	Non-powered Roof Vent - Rnd Dome	ARVE	PR	GRV	DR	LQV	GSAA	GRS	--	--
RFC	R/T Exhaust Forward Curve BD	-	-	-	-	-	VDBA	-	-	300
S	Direct drive shutter fan DD	CDP/WS	--	--	P	--	--	--	SHE	SD/ AX/ S
SDB	R/T Down Blast Exhaust Centrif. BD	CRBCA	ACEB	BCDR	DXB/KB/JB/ MB	PV/PNN	VEBK	GB	BDD/ABE	BDCR/CBR
SDBD	R/T Down Blast Exhaust Centrif. DD	CRDA	ACED	DCRD	DX	PRN	VEDK	G	REC/DDD	DR-H/300/CDR
SDBDe	R/T Down Blast Exhaust Centrif. DD ECM	--	--	--	--	--	--	G-VG	--	--
SQB	Square Inline Duct Fan Centrif. BD	SQBA	SQNB -B/ SQI-B	BSI	SXB	XB	VIBK	BSQ	--	DSQ-B
SQD	Square Inline Duct Fan Centrif. DD	SQDA	SQND -D/ SQI-D	DSI	SX	XD	VIDK	SQ	FSD	DSQ-D
STXB	R/T Up Blast Exhaust Centrif. BD	UBCA	ACRUB	BCRU	FXB/FMX	PNU/PU	VUBK	CUBE	BDU	CDU /CBU
STXB RHUL	R/T Up Blast Exhaust Centrif. BD	CUBA	VCR	BCRUR	FXBFT/FMBFT	PNU-RG	VRBK	CUBE	BDU	BDU/CBUHP
STXD / STXD RHUL	R/T Up Blast Exhaust Centrif. DD	UDCA	ACRUD	DCRU	FX/FMX	PDU	VUDK	CUE	DDU	DU-H /CDU
STXDe / STXDe RHUL	R/T Down Blast Exhaust Centrif. DD ECM	--	--	--	--	--	--	CUE-VG	--	--
SWF	Outside wall mount exhaust DD	--	--	--	--	--	--	--	RVF	-
TD	2 speed inline mixed flow fan DD	--	--	--	--	--	--	--	--	-
TDB / TDD	Tube Axial fans BD/DD	TBC/TEBC	EDB/EDD	TB/TD	BTA/TA	HA / HDD	LIBA/LIDA	TAB/TAD	--	BTA/DDA
UBS	R/T Upblast Exhaust Propeller BD	J/JT	LXU/LEU/ LSU	LPRVX	HS/HZ	UBG	LUBA	PUB/RBU	BLT	RB
UBSRD-HT	R/T Upblast Exh. H. Temp Prop. BD	HS	SUBH	UBT/TUB	HX	UBH-UF	LQBA	TAUB-HT	--	RTA

R/T = Roof Top, BD = Belt Drive, DD = Direct Drive

February 2019



# TOOLS AND RESOURCES

S&P Canada has created tools to help you understand, find or select the right product and solution for your project.

## S&P CANADA CAN CONFIGURE YOUR NEXT JOB OR PROJECT FOR YOU!

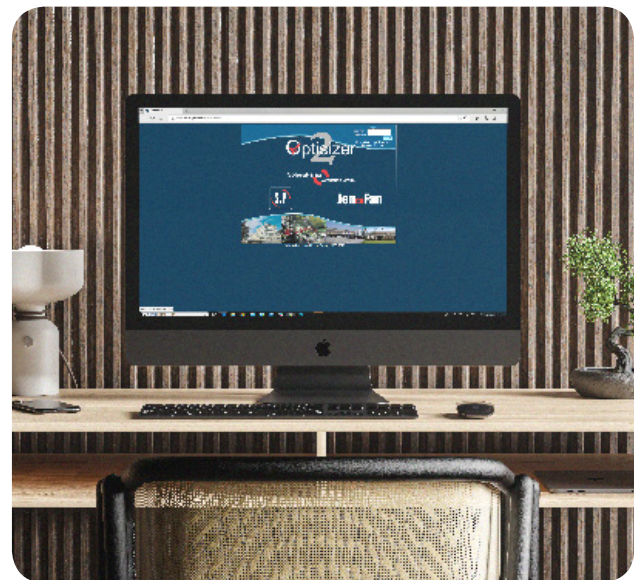
Send your fan schedule/ product requires to [custserv.ca@solerpalau.com](mailto:custserv.ca@solerpalau.com), and we will have submittals and pricing back to you within hours.

## WANT TO CONFIGURE YOUR OWN PROJECT?

Contact S&P USA to open your Optimizer 2 account TODAY!

Our most powerful tool is our OPTISIZER2 fan selection software.

- Web Based
- Nothing to Download
  - No firewall issues
  - No upgrade worries
- Calculates product pricing
- Portable- can be accessed remotely
- Always the latest release
- Can be used on any mobile device with a web browser
- Creates submittals and price quotations quickly and easily



## PRODUCT LEAD TIMES

### IN STOCK PRODUCT:

- Direct Drive- Next Day Shipment
- Belt Drive - 3-5 days from date of order with motors and drives factory installed

### NON-STOCK PRODUCT:

- 4-6 weeks from date of order

**PLEASE SEE S&P CANADA PRICE BOOKS FOR PRODUCT AVAILABILITY.**

SCAN ME  
FOR S&P CANADA



## Canadian Distribution Centre

Phone: 1-866-733-0233  
Fax Toll-Free Order Line: 1-866-358-5346  
[custserv.ca@solerpalau.com](mailto:custserv.ca@solerpalau.com)  
[www.SolerPalauCanada.com](http://www.SolerPalauCanada.com)

