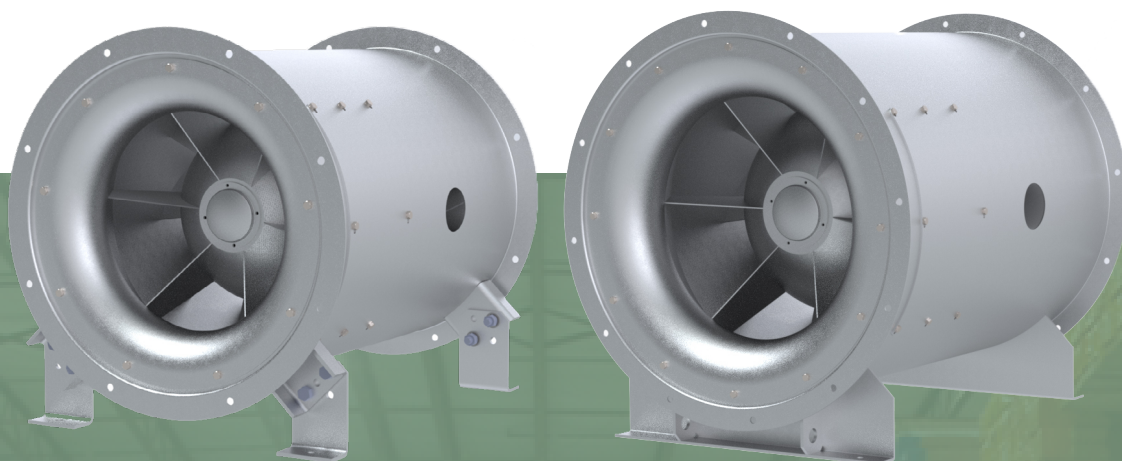




Model SMXD-HT

Direct Drive Mixed Flow Fan for High Temperatures



SMXD-HT series is a direct drive mixed flow fan specially designed to maximize the airflow performance by acting as a hybrid between an axial and centrifugal fan. This HT (high temperature) model can provide emergency heat and smoke ventilation in the event of a fire, which can provide valuable time to people exiting or emergency personnel. The SMXD-HT is UL Certified to exhaust heat and smoke in emergencies [500°F (260°C) for 6 hours and 572°F (300°C) for 2 hours].

Applications include: Mixed-Use Buildings, Restaurants, Warehouses, Distribution Centers, Food Retail and more.

MODEL FEATURES

- 6 sizes ranging from 15" to 24" effective diameter wheels
- Continuously welded and epoxy coated steel housing
- For indoor/outdoor use
- AMCA Air and Sound Licensed
- cULus 705 Listed
- cULus 793 Listed for 500°F (260°C) for 6 hours and 572°F (300°C) for 2 hours



S&P USA Ventilation Systems, LLC certifies that the SMXD-HT shown herein is licensed to bear the AMCA seal. The ratings shown are based on tests and procedures performed in accordance with AMCA Publication 211 and AMCA Publication 311 and comply with the requirements of the AMCA Certified Ratings Program.



S&P Canada Ventilation Products, Inc.
SolerPalauCanada.com

