



**ADVANCING
VENTILATION®**

Commercial and Residential

PRODUCT LINE OVERVIEW

1 PH + 3PH | 50/60HZ

Advancing Ventilation®

v1_02092022
February 2022

Soler&Palau
Ventilation Group



Enabling people and buildings to breathe better, cleaner air

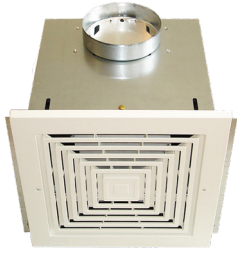


S&P Canada is part of Soler & Palau Ventilation Group, the world's largest air movement manufacturer, since 2005. We respect our humble beginnings as a small fan manufacturer while embracing the latest technological advances and practices in ventilation.

We are here to solve any ventilation problem you may have. Our Application guides make it easy to figure out what fans to use on your next project. Looking to meet the ever-changing ventilation code? We have solutions for that too!

We are committed to providing quality products through excellence in design, manufacturing, and customer support with a focus on the development of our employees and customers alike. Our best-in-class team comes from a diverse background ready to serve you.

RESIDENTIAL



FF/FFC

Ceiling and Cabinet Ventilators

Size 52 to 1578 | 121 to 1891 CFM

IN STOCK AVAILABILITY



MD and MDX-ES24VK kits

Motorized Dampers

Size 4" to 14" | Kits : 4" to 8"



PCXP

Premium CHOICE AC Motor Series

Size 50 to 150 | 50 to 150 CFM

IN STOCK AVAILABILITY



PCRL

Premium CHOICE

Recessed Light Models

Size 80 | 80 CFM

IN STOCK AVAILABILITY



PCV

Premium CHOICE Value Series

Size 50 to 80 | 50 to 80 CFM

IN STOCK AVAILABILITY



PCD

Premium CHOICE

DC Motor Series

Size 80 to 150 | 80 to 140 CFM

IN STOCK AVAILABILITY



PCLP

Premium CHOICE

Low Profile Series

Size 80 to 100 | 80 to 100 CFM

IN STOCK AVAILABILITY



PCLPXP

Premium CHOICE

Low Profile XP Series

Size 80 to 100 | 80 to 100 CFM

IN STOCK AVAILABILITY



PCLPD100XHP

Premium CHOICE

DC Motor Low Profile XHP Series

Size 100 | 50 to 100 CFM

IN STOCK AVAILABILITY



PV-DEDPV

Dryer Exhaust Duct Power Ventilator

130 CFM

IN STOCK AVAILABILITY



PRF

Radon Mitigation Fan

Size 100 to 150 | 150 to 290 CFM

IN STOCK AVAILABILITY



PV

Inline Centrifugal Duct Fan

Size 100X to 315X | 130 to 943 CFM

IN STOCK AVAILABILITY





reFresh

Filtered Supply Fan

Size 8 to 10 | 20 to 180 CFM



SWF

Sidewall Fan

Size 100 to 315 | 100 to 400 CFM

IN STOCK AVAILABILITY



TD

Inline Mixed Flow Duct Fan

Sizes 100 to 400 | 70-3,124 CFM

IN STOCK AVAILABILITY



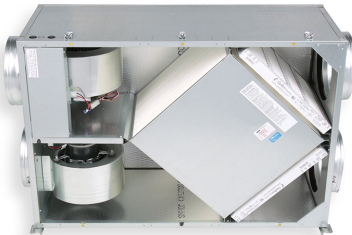
TD-Silent

Inline Mixed Flow Duct Fan

Size 125X to 200 | 200 to 480 CFM

IN STOCK AVAILABILITY

ENERGY RECOVERY VENTILATORS



TRC and TRCV

Total Recovery for
Commercial Applications

Size 500 to 1600 | 540 to 1950 CFM



TRCe

Total Recovery for Commercial
Applications with EC motor

Size 500 to 1200 | 200 to 1500 CFM



What is ECOWATT®?

S&P's Ecowatt® products are our most energy-efficient models.

They use Electronically Commutated (EC) or Direct Current (DC) motors.

Ecowatt® Accessories are motor control devices and systems that reduce energy consumption.



ECOWATT®



RHUL Option



High Wind Option



High Temperature Option

CENTRIFUGAL ROOF AND SIDEWALL



LPD

Low Profile Direct Drive Exhaust
Size 6 to 8 | 50 to 420 CFM
IN STOCK AVAILABILITY



CWD

Direct Drive Centrifugal Sidewall Exhaust Fan
Size 7 to 16 | 66 to 3,360 CF
IN STOCK AVAILABILITY

DIRECT DRIVE MODELS



SDBD

Downblast Direct Drive Exhaust Fans
Size 6 to 16 | 53 to 4,984 CFM
IN STOCK AVAILABILITY



SDBDe

Downblast Direct Drive Exhaust Fans
with EC Motor
Size 6 to 16 | 53 to 3,507 CFM
IN STOCK AVAILABILITY



STXD/STXD-RHUL

Upblast Direct Drive Exhaust Fans
Size 6 to 16 | 55 to 4,781 CFM
IN STOCK AVAILABILITY



STXDe/STXDe-RHUL

Upblast Direct Drive Exhaust Fans with EC motor
Size 6 to 16 | 53 to 3,187 CFM
IN STOCK AVAILABILITY



BELT DRIVE MODELS



SDB

Downblast Exhaust fans
Size 6 to 48 | 41 to 31,563 CFM
IN STOCK AVAILABILITY



STXB/STXB-RHUL/STXB-HT2/STXB-HT

Upblast Exhaust fans
Sizes 8 to 48 | 201 to 37,920 CFM
IN STOCK AVAILABILITY FOR STXB/STXB-RHUL



ECOWATT®



RHUL Option

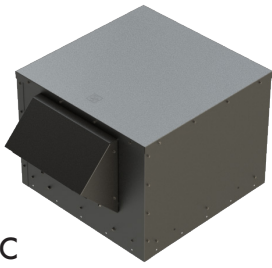


High Wind Option



High Temperature Option

BELT DRIVE ROOF EXHAUST AND SUPPLY FANS



RFC

Forward Curved Belt Driven Roof Fan
Size 7 to 18 | 300 to 7,750 CFM
[IN STOCK AVAILABILITY](#)



CSF and LSF

Centrifugal Filtered Roof Supply Fan
Size 9 to 20 | 440 to 12,520 CFM
[IN STOCK AVAILABILITY FOR CSF SERIES](#)



KSFV

Kitchen Supply Fan
Size 9 to 20 | 466 to 12,600 CFM
[IN STOCK AVAILABILITY](#)

CENTRIFUGAL INLINE BELT DRIVE MODELS



SQB

Belt Drive Square Inline Fan
Size 7 to 42 | 98 to 24,544 CFM
[IN STOCK AVAILABILITY](#)



CTB/CTB-RHUL

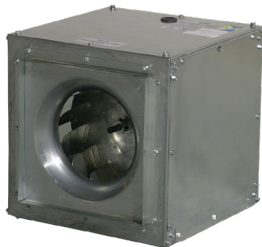
Inline Tubular
Size 9 to 42 | 300 to 20,300 CFM



CFD

Forward Curved Belt Drive In-line
Duct Blower
Size 7 to 15 | 200 to 5,800 CFM
[IN STOCK AVAILABILITY](#)

DIRECT DRIVE MODELS



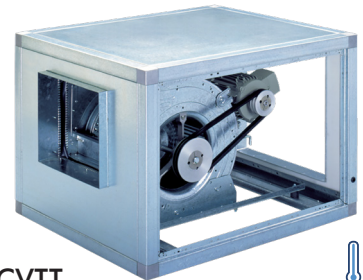
SQD/eSQD

Direct Drive Square Inline Fan
Size 6 to 15 | 93 to 3,533 CFM
[IN STOCK AVAILABILITY](#)



SMXD/SMXD-HT

Direct Drive Mixed Flow Fan
Size 15 to 24 | 673 to 17,000 CFM



CVTT

Forward Curved Belt Drive Cabinet Fan
Size 7 to 30 | 200 to 30,000 CFM
[IN STOCK AVAILABILITY](#)



INLINE TUBEAXIAL



TDD

Direct Drive Inline Tubeaxial
Size 12 to 48 | 855 to 40,194 CFM



TDB

Belt Drive Inline Tubeaxial
Size 12 to 60 | 1,189 to 75,490 CFM
[IN STOCK AVAILABILITY](#)



ECOWATT®



RHUL Option



High Wind Option

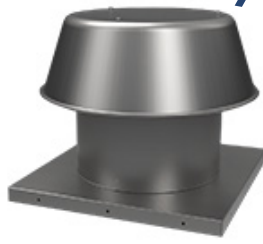


High Temperature Option

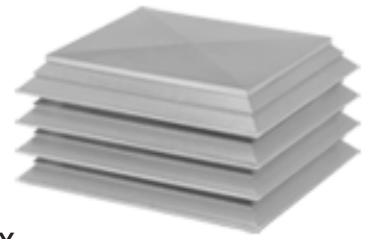
GRAVITY VENTS INTAKE/RELIEF



BGH
Fabricated Gravity Relief/Intake Ventilator
Size 12 X 12 to 72 X 144 | 536 to 90,000 CFM



RCXII/RCXII-SF
Gravity Relief/Intake Ventilators
Size 6 to 36 | 64 to 10,378 CFM

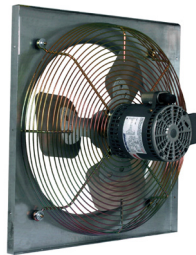


RLX
Louvered Penthouse
Size 12X12 to 84 X144 | 536 to 90,000 CFM

PROPELLER SIDEWALL DIRECT DRIVE MODELS



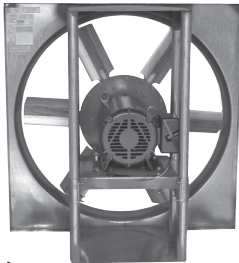
GED/GSD
Low Pressure Direct Drive
Exhaust/Supply Fans
Size 10 to 20 | 200 to 3,500 CFM
[IN STOCK AVAILABILITY FOR GED MODELS](#)



eGED/eGSD
Low Pressure Direct Drive
Exhaust/Supply Fans with EC Motor
Size 10 to 20 | 200 to 3,500 CFM
[IN STOCK AVAILABILITY FOR eGED MODELS](#)



DFE/DFS
Medium Pressure Direct Drive
Exhaust/Supply Fans
Size 10 to 30 | 37 to 12,415 CFM

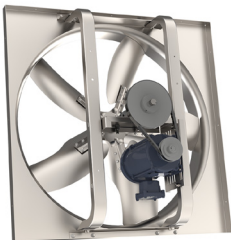


DDE/DDS
High Pressure Direct Drive Exhaust/Supply Fans
Size 24 to 60 | 3,500 to 55,800 CFM

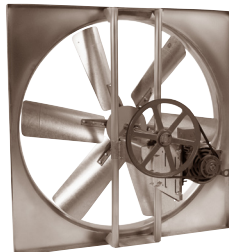


MODEL "S" SERIES
Wall Exhaust Shutter Fans
Size 8 to 36 | 140 TO 12,00 CFM
[IN STOCK AVAILABILITY](#)

BELT DRIVE MODELS



LCE/LCS
Low Pressure Direct Drive Exhaust/Supply Fans
Size 20 to 60 | 2,829 to 40,855 CFM
[IN STOCK AVAILABILITY FOR LCE SERIES FANS](#)



L2E/L2S
Medium Pressure Direct Drive
Exhaust/Supply Fans
Size 24 to 60 | 5,000 to 47,000 CFM
[IN STOCK AVAILABILITY L2E SERIES FANS](#)



L3E/L3S
High Pressure Direct Drive
Exhaust/Supply Fans
Size 42 to 72 | 21,683 to 85,089 CFM



ECOWATT®



RHUL Option

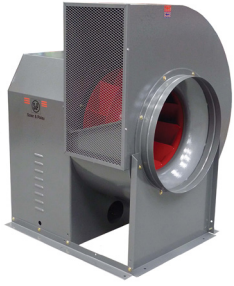


High Wind Option



High Temperature Option

UTILITY EXHAUST/SUPPLY



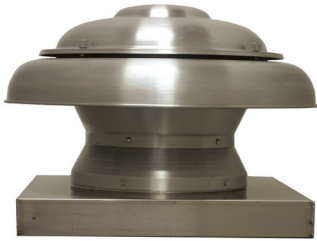
CM

Belt Drive Utility Vent Set

Sizes 10 to 36 | 499 to 23,958 CFM

[IN STOCK AVAILABILITY](#)

PROPELLER ROOF VENTILATORS DIRECT DRIVE MODELS

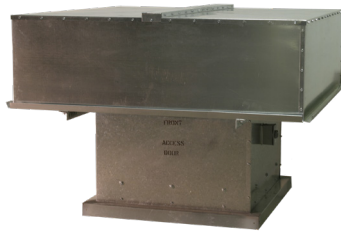


ARE/ARS

Dome Axial Power Roof Exhaust/Supply Fans

Size 10 to 20, 167 to 2,827 CFM

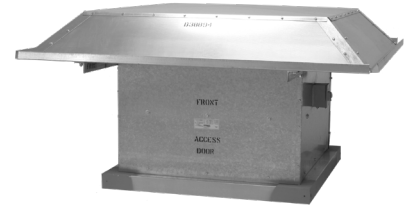
[IN STOCK AVAILABILITY](#)



HRED-C

Hooded Exhaust Fans

Size 24 to 60 | 1,193 to 48,780 CFM



HRSD

Hooded Supply Fan

Size 24 to 54, 2,509 to 50,109 CFM



UBX

Upblast Exhaust Fans

Size 24 to 72 | 5,200 to 65,500 CFM

BELT DRIVE MODELS

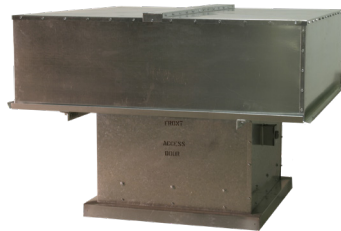


UBS/UBS-P

Upblast Exhaust Fans

Size 24 to 60 -
3,730 to 51,000 CFM

[IN STOCK AVAILABILITY FOR UBS SERIES](#)



HREB-C and HREB-P

Hooded Exhaust Fans

Size 24 to 72 -
1,159 to 93,240 CFM



HRSB

Hooded Exhaust Fans

Size 24 to 60 -
2,979 to 52,534

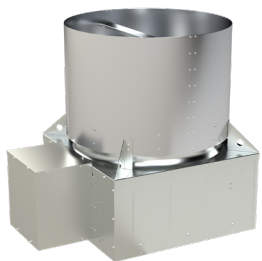


UBB

Upblast Exhaust Fans

Size 24 to 72 -
3,090 to 70,800

REMOTE DRIVE MODELS



UBSRD/UBSRD-HT/UBSRD-HT1 (Exhaust)

Upblast Exhaust Fan for Heat and Smoke Removal

Size 24 to 60 | 4,977 to 52,173 CFM



TUB/TUB-HT/TUB-P (Exhaust)

Tubeaxial Upblast Exhaust Fan

Sizes 24 to 60 | 4,321 to 60,116 CFM

JET FAN SERIES



IFFT/IFFTe

Centrifugal Jet Fan

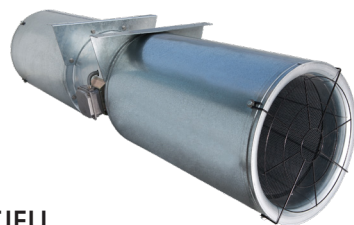
Size 50N to 100N | 1,754 to 5,238 CFM



IFAB/IFEB

Low Profile Centrifugal Jet Fans

Size 12N | 200 to 3,500 CFM



TJFU

Medium Pressure Direct Drive Exhaust/Supply Fans

Size 315 to 400 | 1,560 to 6,474 CFM

HIGH VOLUME LOW SPEED



Tornado

5-Blade HVLS

Size 10 to 24



Tempest

6-Blade HVLS

Size 6 to 16



ECOWATT®



RHUL Option



High Wind Option



High Temperature Option



ECOWATT®-DRIVE

The Ecowatt®-Drive is a variable frequency drive that allows easy motor pairing and performance control. Requiring just 4 parameters to get your fan set up, this robust and reliable design offers plug-in options for advanced control. Equipped with the latest energy-saving features, Ecowatt®-Drive offers up to 180% overload for high torque applications.

KEY FEATURES:

- Set just 4 parameters to get your fan started
- Plug-in options for advanced control
- Dual Safe Torque Off (STO)
- Equipped with the latest energy-saving features
- Up to 180% overload for high torque applications
- Onboard PLC
- Straightforward installation and commissioning
- Easy motor pairing and performance control
- Robust and reliable design



Product Pairings:

- SMXD - Mixed Flow Fan
- IFFT - Centrifugal Jet Fan
- TJFU - Axial Jet Fan
- LC - Belt Drive Sidewall Propeller Exhaust/Supply Fans
- L3 - Belt Drive Sidewall Propeller Exhaust/Supply Fans
- CM - Belt Drive Utility Vent Set
- STXB - Upblast Belt Drive Centrifugal Roof/Sidewall Exhaust Fans
- SDB - Belt Drive Centrifugal Downblast Roof Exhaust Fan
- SQB - Belt Drive Square Inline Centrifugal Duct Fan
- and more!



S&P's Ecowatt® products are our most energy-efficient models. They use Electronically Commutated (EC) or Direct Current (DC) motors. Ecowatt® Accessories are motor control devices and systems that reduce energy consumption.



S&P Canada Ventilation Products, Inc.
solerpalaucanada.com



EC Motor Multispeed Control ECM-MSPD

**Ecowatt® Now Available on
Select Commercial Products!**



eSQD



eGED



STXDe



SDBDe

Now Available on: STXDe, STXDeRHUL, SDBDe, eGED, eGSD, & eSQD

The ECM-MSPD (Multispeed):

- Is an interface for setting and switching between two independent motor speeds for a single motor.
- Uses an open-closed contact (by others) to switch between speeds easily.
- Has on-board multi-meter nodes to provide set-point and RPM measurements.
- Is recommended for use in restaurants, multi-family structures, condos, and schools where manual or demand controlled ventilation applications require high and low speed operation.

What is Ecowatt®?

To be categorized as EcoWatt® a product must meet the following standards:

- The product must use a EC or DC motor.
- The product must have third-party certified performance (AMCE or HCl certifications).
- Products designed for residential applications must be ENERGY STAR® qualified.



S&P Canada Ventilation Products, Inc.
www.solerpalaucaCanada.com



QUICK SELECTION

Model	Mounting Location						Airflow		Application							Motor/Drives			Impeller Type			
	Roof Curb	Floor/Base	Hanging	Wall	Ceiling		Exhaust	Supply	General/Clean Air	Contaminated Air	Spark Resistant	Grease/Restaurant (UL762)	Smoke Control (UL)	High Temp above 200° F	Energy Recovery	Belt	Direct	Ecowatt® (EC Motor Available)	Centrifugal	Propeller	Mixed Flow	
Residential/Light Commercial																						
TD		x	x	x	x	x	x	x	x								x				x	
TD-SILENT		x	x	x	x		x	x	x								x				x	
PV		x	x	x	x		x	x	x								x		x			
reFresh		x	x	x	x			x	x								x		x			
SWF							x	x	x								x		x			
PC/PCLP/PCV/PCRL				x	x		x		x								x		x			
PCD					x		x		x								x		x			
FF/FFC			x		x		x		x								x		x			
PRF		x	x	x	x		x		x								x		x			
Recovery Ventilators (ERVs & HRVs)																						
TRC		x	x	x	x		x	x	x	x							x		x			
TRCe		x	x	x	x		x	x	x	x								x				
Centrifugal Roof and Sidewall Fans																						
LPD	x			x			x		x		x						x		x			
SDBD/SDBDe	x						x		x		x						x		x			
SDB	x						x		x		x								x			
STXB	x			x			x		x		x						x		x			
STXB-RHUL	x						x		x		x						x		x			
STXB-HT2/STXB-HT	x						x		x		x								x			
STXD/STXDe	x			x			x		x		x						x		x			
STXD-RHUL/STXDe-RHUL	x						x		x		x						x		x			
CWD				x			x		x		x						x		x			
Centrifugal Filtered Supply																						
CSF/LSF	x							x	x								x			x		
KSFV	x							x	x								x			x		

* Models TRC(e) and CRT (ERVs) have a 10-year core warranty and a 5-year warranty on the balance of the TR unit and a 2-year warranty on the balance of the TRC(e) and CRT.

Centrifugal Inline															
SQB		x	x	x	x	x	x	x						x	
SQD/ e SQD		x	x	x	x	x	x						x		
CFD		x	x	x	x	x	x							x	
CFD/CVTT		x	x	x	x	x					x				
CTB-RHUL		x	x	x	x	x	x				x			x	
Propeller Sidewall Fans															
LC/L2/L3															x
G/ e G/DD/DF				x	x	x	x							x	
Propeller Roof Ventilators															
HRSB/HRSD	x							x						x	
HREB-C/HRED-C	x								x						
ARE/ARS	x							x						x	
UBS	x								x						
UBSRD	x								x						
UBSRD-HT/HT-1	x								x						
UBB/UBX	x								x					x	
UBRD	x								x						
TUB	x								x						
TUB-HT	x								x						
Inline Tubeaxial															
TDB		x	x	x	x	x	x	x							
TDD		x	x	x	x	x	x	x							
Utility Sets															
CM		x							x						
CM-RHUL		x							x						
CM-HT		x							x						
Gravity Vents Intake/Relief															
RCXII	x	x							x						
BGH	x								x						
RLX	x								x						
Jet Fan Series															
IFFT/IFFT e			x		x	x	x	x						x	
TJFU			x		x	x	x	x							
IFAB/IFEB					x	x	x	x						x	

Competitors Cross Reference Models

Models are for general similarity only.

Refer to specifications and construction data for details.

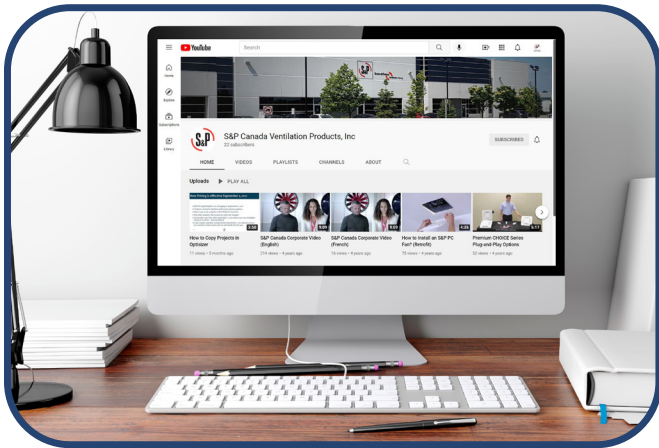


S&P MODEL	DESCRIPTION	COOK	TWIN CITY	PENN	ACME	CARNES	GREENHECK	FANTECH	CANARM/ DELHI
SDB	R/T Down Blast Exhaust Centrif. BD	ACEB	BCRD	DXB/KB/JB/MB	PV/PNN	VEBK	GB	BDD/ABE	ALX-DB/SB
LPD & SDBD	R/T Down Blast Exhaust Centrif. DD	ACED	DCRD	DX	PRN	VEDK	G	REC/DDD	ALX-DD/SD/ A2X-DD
SDBDe	R/T Down Blast Exhaust Centrif DD-EC	ACED (EC)	DCRD (EC)	DX (G+)			G-VG		A2X-DD-EC/ALX- DD-EC
STXB	R/T Up Blast Exhaust Centrif. BD	ACRUB	BCRU	FXB/FMX	PNU/PU	VUBK	CUBE	BDU	ALX-UB/SBRM
STXB (UL-762)	R/T Up Blast Exhaust Centrif. BD	VCR	BCRUR	FXBFT/FMBFT	PNU-RG	VRBK	CUBE	BDU	ALX-UB/SBRM
STXD	R/T Up Blast Exhaust Centrif. DD	ACRUD	DCRU/R	FX/FMX	PDU	VUDK	CUE	DDU	ALX-DD/SDUB/ A2X-UD
STXDe	R/T Up Blast Exhaust Centrif DD-EC	ACRUD (EC)	DCRU (EC)	FX (G+)			CUE-VG		A2X-UD-EC/ALX- UD-EC
CWD	Sidewall Exhaust Centrif. DD	ACWD	TCWX	WX/WA/WB	PW	VWVK	GW		
PC	Ceiling fans less .3 ones DD	GEMINI		ZEPHYR					
RFC	R/T Exhaust Forward Curve BD					VDBA			300
CTB	Inline Duct Centrif. BD	TCN	TCLB/TCLBR	TUB	LQ	VGBA	TCB		
FF/FFC	Ceiling Cabinet Fans DD	GC-GN	T/TL	ZEPHER-Z	V/VQ/VQL	VCDD	SP/CSP	CEV/IEV	
KSFV	Rif Filtered Fresh Air Supply Fan BD	KSPB	BCFS	MU/FS	AFSI	VSBB	KSU/RSV	FSU	SIS/SBAR
ARE/ARS	R/T Dome Exhaust/Supply Axial. DD	AQD		DAE	LQ	LEDA	AIS		
S	Direct Drive Shutter Fan DD			P				SHE	SD/AX/S
GED/GSD	Sidewall Exhaust/Supply Prop. DD	APD	TCPE	P	FQ/FN	LTDK/LZDK	SE1/SS1	VLD	P
LCE/LCS	Sidewall Exhaust/Supply Prop. BD	XLM/SWB	WPMD	BL/BFM/BBK	DC/DCK	LWBA/LWBK	SBE/S 1&2	SDE	DDS/ADD
L2E/L2S	HD Sidewall Exhaust/Supply Prop. BD	XL/XM/ AWB/HWB	TCWPX*	BFM/BFH/BCH	DCK/DCH	LABA	SBE/SBC	MDE	XB/HV
SQB	Square Inline Duct Fan Centrif. BD	SQNB-13/ SQI-B	BSI	SXB	XB	VIBK	BSQ		DSQ-B
SQD	Square Inline Duct Fan Centrif. DD	SAND-D/ SQI-D	DSI	SX	XD	VIDK	SQ	FSD	DSQ-D
UBS	R/T Upblast Exhaust Propeller DB	LXU/LEU/LSU	LPRVX	HS/HZ	UBG	LUBA	PUB/RBU	BLT	RB
HREB-C	R/T Hooded Exhaust Propeller BD	HXE/HEE	LPHD/B	AF/AC	EC/ECH	LTBA	RBE/RBCE	RHE	PRE
UBSRD-HT	R/T Upblast Exh. H. Temp Prop. BD	SUBH	UBT/TUB	HX	UBH-UF	LQBA	TAUB-HT		RTA
HRSB	R/T Hooded Supply Propeller BD	HXS/HES	HVWP	AF/AC	EC-S/ECH-S	LGBA	RBS/RBCS	RHS	PRI
TDB/TDD	Tube Axial Fans BD/DD	EDB/EDD	TB/TD	BTA/TA	HA/HDD	LIBA/LIDA	TAB/TAD		BTA/DDA
CM	Vent Sets/ BI / cUL705 & 762 & 793 BD	CPV/S	BCV/J	D/RPK	QBR		SWB		BI/BI-RM
RCXII	Non-Powered Roof Vent - Rnd Dome	PR	GRV	DR	LQV	GSAA	GRS		
CSF	R/T Centrifugal Filtered Supply BD	ASP	FSR	MU		VHBB/VSBB	RSF		700
CVTT	Forward Curve Air Handler 7' to 30" BD		DBS			VGBA			9200
CFD	Forward Curve Air Handler 7' to 15" DD/BD	DB	DBS	ZC		VDBA			200
CBS	Single Inlet Blower BD		DBS						400
CBM	Direct Drive Dual Inlet Blower DD							BLR	GDD
CBP	Belt Drive Dual Inlet Blower BD		TFC						G
CBP-RC	Belt Drive Dual Inlet Framed Blower BD		VFC						800
CBP-RE	Belt Drive Dual Inlet Framed HD Blower BD		TFC-2						900
FCB	Belt Drive Forward Curve Vent Set BD		FCV			VFB	SFB		600
TD	2 Speed Inline Mixed Flow Fan DD								
PV	Backward Incline Inline Fan DD							FG	
SWF	Outside Wall Mount Exhaust DD							RVF	
PW	Radial Blade Pressure Blower DD						FPA		PW
KE	Radial Blade Pressure Blower DD	CPFD	JRW				IPA		KE
D	Forward Curve Direct Drive Blower DD		DDF				SFD		D
SMXD	Commercial Duty Mixed Flow DD	TCND		MXI			QEID		

R/T = Roof Top, BD = Belt Drive, DD = Direct Drive

TOOLS AND RESOURCES

S&P Canada has created tools to help you understand, find or select the right product and solution for your project.



SOCIAL MEDIA

S&P Canada is active on Instagram, LinkedIn & YouTube! Get behind the scenes with our company as well as receive company & product announcements!



LITERATURE

BROCHURES, SUBMITTALS AND DOCUMENTS



IMPORTANT DATES

HOLIDAY CLOSURES



OPTISIZER 2

FAN SELECTION SOFTWARE



CODE SOLUTIONS

MEET BUILDING CODES WITH S&P CANADA



REVIT FILES



S&P UNIVERSITY

ACCESS CLASSES ABOUT S&P PRODUCTS



SCAN ME
FOR S&P USA



SCAN ME
FOR S&P CANADA



**ADVANCING
VENTILATION®**

S&P USA Ventilation Systems, LLC
6393 Powers Avenue
Jacksonville, FL 32217
T. 904-731-4711 • F. 904-737-8322
www.solerpalau-usa.com

S&P Canada Ventilation Products, Inc
6710 Maritz Drive Unit #7
Mississauga, ON L5W 0A1 - Canada
T. 416-744-1217 • F. 416-744-0887
www.solerpalaucanada.com

Soler&Palau  **Ventilation Group**